



Back *Together* in BHM Schools

Planning Guide for the 2020-21 School Year
In the Buffalo-Hanover-Montrose School District

Table of Contents

Start-of-Year Proposal (First 2 Weeks of School)	2
Determining a Safe Learning Model.....	3
Three Learning Models.....	4
In-Person Learning.....	5
Hybrid Learning	6
Distance Learning.....	7
COVID Screening.....	8
COVID Decision Tree	9
Special Education	10
Transporation	11
Nutrition Services.....	11
Community Education	12
Pre-Kindergarten.....	12
KidKare Childcare.....	12
Athletics and Activities	13

Help Keep Everyone Safe!

For the safety of all students and staff, Minnesota Executive Order 20-81 requires all K-12 students, staff and visitors to wear face coverings when inside school buildings.



Wear a mask.

A face covering must be worn to enter our schools. Make sure it fits properly over your nose, mouth and chin.



Sick? Stay home.

Do not enter if you are feeling ill or exhibit any symptoms related to COVID-19 such as a fever, cough or shortness of breath.



Maintain six feet of space.

Please make all efforts to maintain at least six feet of physical distancing between you and the next person.



Wash/Sanitize your hands.

Please remember to wash your hands or use hand sanitizer before entering the building.

Message from the Superintendent



Scott Thielman

Welcome back to school! This school year will be unlike any other. With a world-wide COVID-19 pandemic steering our decisions, we are going to do our best to keep on course. We are committed to doing what's best for our students and staff and creating a learning environment that promotes health, safety and a high-quality education. We are here to guide you through this unique school year!

Our #1 goal is to have all students and staff return to the classroom in a safe and secure environment. We are working hard to make that happen by following the Minnesota Safe Learning Plan. The plan allows us to use one of three models depending on the virus activity in our county. The decision is based on data and direction from our local, state and county health experts.

On Monday, August 24, we will propose our plan for the 2020-21 school year to the BHM Board of Education. Our proposal is to delay the start of school by two days in order to allow teachers and staff more time to prepare for the start of the school year and to help elementary

and transitioning grade levels (grades 6 and 9) learn the new safety procedures and protocols for school. Those two days will utilize the Hybrid Learning model. By September 14, we will implement the proposed In-Person Learning for all elementary schools (including preschool classes) and Hybrid Learning for grades 6-12. You can see the models that we are proposing and a sample schedule of the first two weeks of school on p.2. The following pages of this plan outline the model parameters and decision making process, the three models and the changes we have made in BHM Schools to make sure our students and staff can safely return to school.

There has been a great deal of planning and preparation for everything that we will face this school year. I can't thank you enough for your patience and understanding as we all work together to prepare for a successful school year. Be sure to take a moment to read through this guide to help you plan for the year ahead. We are excited to be Back "Together" in BHM Schools where we know it's the place where students can *Dream, Believe and Achieve!*

—Scott Thielman, Superintendent

Start-of-Year Proposal

The Back "Together" in BHM Schools plan will be presented to the BHM School Board on Monday, August 24, 2020 for approval. The district is recommending to delay the start of school until Thursday, September 10. All elementary and 6th and 9th grade students will attend on September 10-11 following a Hybrid model. This will allow students in grades K-5 and those in transitioning grade levels an opportunity to learn the new safety procedures and protocols for the school day. By September 14, all students will follow the proposed learning models to begin the 2020-21 school year:

In-Person Learning for Grades K-5

- Students will attend school in person Monday-Friday
- Student cohorts will be used to limit mixing throughout the day, including at lunch and during recess.

Hybrid Learning for Grades 6-12 (*buildings at 50% capacity with social distancing requirements enforced*)

- **Group A**—Students with last names A-K
Attends school Mondays and Wednesdays with At-Home Learning on Tuesdays and Thursdays
- **Group B**—Students with last names L-Z
Attends school Tuesdays and Thursdays with At-Home Learning on Mondays and Wednesdays

Fridays are At-Home Learning days for both groups with opportunities for additional help/instruction from teachers. All students living in the same household, regardless of last name, will follow the same Hybrid Learning schedule.

First 2 weeks of school schedule below. Learn more about the learning models on p. 4-7.

Monday September 7	Tuesday September 8	Wednesday September 9	Thursday September 10	Friday September 11
No School Labor Day	No School Teacher Work Day	No School Teacher Work Day	Group B All Elementary Schools BCMS—Grade 6 Only BHS—Grade 9 Only	Group A All Elementary Schools BCMS—Grade 6 Only BHS—Grade 9 Only
Monday September 14	Tuesday September 15	Wednesday September 16	Thursday September 17	Friday September 18
Elementary—All Students In-Person	Elementary—All Students In-Person	Elementary—All Students In-Person	Elementary—All Students In-Person	Elementary—All Students In-Person
BCMS/BHS/PLC Group A—In-Person	BCMS/BHS/PLC Group B—In-Person	BCMS/BHS/PLC Group A—In-Person	BCMS/BHS/PLC Group B—In-Person	**BCMS/BHS/PLC Groups A and B At-Home Learning
BCMS/BHS/PLC Group B—At-Home Learn.	BCMS/BHS/PLC Group A—At-Home Learn.	BCMS/BHS/PLC Group B—At-Home Learn.	BCMS/BHS/PLC Group A—At-Home Learn.	

BCMS: Grades 6-8 (unless otherwise noted) | BHS/PLC: Grades 9-12 (unless otherwise noted)

**BCMS/BHS/PLC students who need extra support may be allowed to come in to work with a teacher on Fridays.
All other students will participate in At-Home Learning.

Not Your Traditional Open House

Due to guidance regarding health and safety for our community, we will not be holding a traditional in-person open house prior to the start of school. Families will receive a video message from their child's teacher welcoming them to the new school year and providing students and families with other important "back-to-school" information.

The place to
**dream, believe
and achieve.** 2

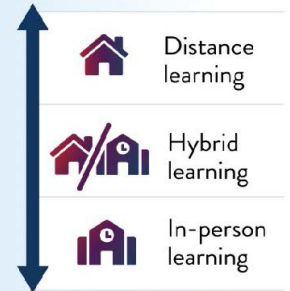
Determining a Safe Learning Model

BHM Schools is following the Minnesota Safe Learning Plan for schools to determine which learning model the district will use this fall and throughout the 2020-21 school year. We are working closely with Wright County Public Health (WCPH) to monitor the level of case activity in the county and, in particular, the communities of Buffalo, Hanover and Montrose. Our guidance on the model we use will come from that data along with recommendations from the Minnesota Department of Health (MDH). We will use the chart on the right to assess and determine the appropriate learning model for school.

How do schools determine their safe learning model?

- STEP 1** Minnesota Department of Health (MDH) will use data from counties to determine a base learning model for public schools.
- STEP 2** Minnesota Department of Education (MDE) will share county data and the consultative process for public schools to engage with education and public health experts to review their county health data and safe learning plans.
- STEP 3** Public schools, with their incident command team, will evaluate their ability to implement required and recommended health best practices.
- STEP 4** Public schools, in consultation with public health, will determine a learning model to begin the school year and communicate that decision with their school community.*
- STEP 5** Public schools and MDH will monitor the community and school-level impact of COVID-19 on a regular basis. Adjustments will be made to the learning model if needed.

Safe learning models:



* Regardless of learning model, all public schools must offer an equitable distance learning option to all families.

Source: MN Safe Learning Plan

Do the Math

As the guidelines state, we will work closely with WCPH to monitor the bi-weekly (14 days) COVID case rate for the county. The data uses the number of cases in Wright County over a 14-day period, per 10,000 people by the date the specimen was collected (person was tested). While any increase in case incidence represents greater potential risk, schools may consider a bi-weekly case rate of 10 or more cases per 10,000 to be an elevated risk of disease transmission within the local community, especially when the level of cases per week is sustained or is increasing over time.

$$\frac{\text{Total number of cases for last 14 days}}{\left(\frac{\text{County population}}{10,000} \right)} = \text{14-day county case level rate per 10,000}$$

Source: MN Safe Learning Plan

Two Counties Make-Up BHM Schools

Since the majority of BHM Schools is in Wright County (a small eastern portion of our district, in the Hanover area, is in Hennepin County), we will use only Wright County data to determine our learning model.

Once a model has been selected for the start of the year, we could shift to another learning model based on the changing case activity in the community. We will monitor the bi-weekly county-level case data closely.

Learning Model Parameters

Number of Cases per 10,000 Over 14 Days, by County of Residence	Learning Model
0-9	In-Person Learning for all students
10-19	In-Person Learning for elementary students; Hybrid Learning for secondary students
20-29	Hybrid Learning for all students
30-49	Hybrid Learning for elementary students; Distance Learning for secondary students
50+	Distance Learning for all students

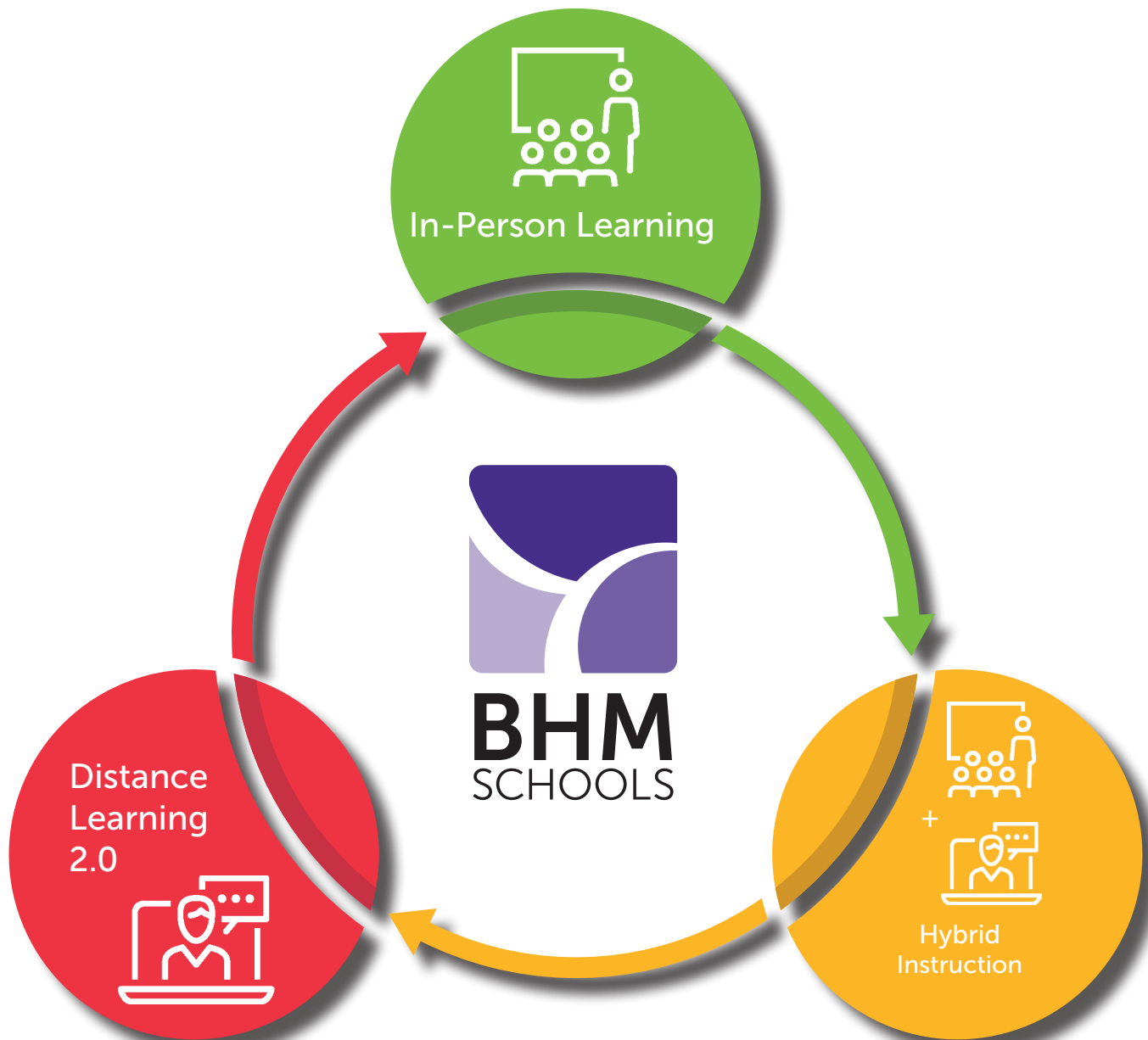
Source: MN Safe Learning Plan

Wright County COVID-19 Case Data

July 5-18	July 12-25	July 19 - August 1	July 26 - August 8
13.18	12.88	11.90	11.53

The 3 Learning Models

The Minnesota Department of Education has outlined the three learning models for the 2020-21 school year. They are outlined in the diagram below and are explained more in depth on the following pages. It is expected that we will move in and out of the three models throughout the course of the year as the number of COVID-19 cases fluctuates in Wright County. Families should keep in mind that the learning model determination may not be the same for all grade levels.



TAKE NOTE: Learning Models will change. The Minnesota Safe Learning Model Parameters that are shown on p. 2, currently indicate that BHM Schools is in the 10-19 range as determined by the bi-weekly Wright County COVID case data (chart on p.2). As you can see, the data continues to trend down for Wright County. BHM families will be updated on any changes as quickly as possible.

The place to
dream, believe
and **achieve.** 4

In-Person Learning



It is the goal of BHM Schools to welcome all students K-12 back into our buildings for the 2020-21 school year. Below is a brief description of what In-Person Learning would look like and the new safety precautions that have been put into place to make it happen.



School hours are the following:

7:45 a.m.–2:25 p.m. – All Elementary Schools

8:50 a.m.–3:25 p.m. – Middle School, High School and Phoenix Learning Center

9:00 a.m.–3:15 p.m. – PRIDE Transitions

Safety Precautions – The following is a list of safety precautions that will be implemented for the 2020-21 school year based on guidance from the Minnesota Department of Health and the Minnesota Department of Education.



Parents are asked to perform health checks of their child(ren) prior to sending them to school. If a child has any COVID-19 symptoms (see p. 8), keep him/her home.



To limit exposures, parents and non-essential visitors will only be allowed to enter the office area. Plans for student pick-up and drop-off outside of our schools will be communicated to families later this month.



Students will be assigned seats and family members will sit together in an effort to limit exposure. Face coverings will be required. *Read more about Transportation on p. 11.*



Additional cleaning procedures and sanitizing protocols are in place for schools and buses. Shared equipment, technology, toys, supplies, books, desks, tables, chairs and other items will be cleaned between each use.



Students in grades K-12 and BHM staff will be required to wear face coverings (mask, shield, buff/gaiter, religious face covering, etc.) during the school day and on the bus following the guidance within the Governor's Executive Order 20-81. At this time, students will need to wear their face covering while in the classroom, but not during recess or meals. Mask breaks will be provided throughout the day as guided by the executive order. The state is providing each child with a cloth mask and three disposable masks.



In the last seven to ten years, we have updated the air handling units in ALL of our buildings which has put us in the best possible position to address the air quality for COVID-19 concerns.



Students will be expected to wash hands or use hand sanitizer throughout the day. Each school is equipped with hand sanitizing stations and students will be allowed to bring their own hand sanitizer.



Physical distancing will be practiced as much as possible, recognizing that the 6 feet of distancing will not always be feasible. Clear barriers are in office areas, new signage will be on floors and walls as reminders and "extra" items have been removed from classrooms and other areas to create more space. Field trips and assemblies are currently suspended.



Students will eat in the cafeteria with their cohort and will be served individually packaged meals with no self-service food items available.



Elementary students will play outside with their cohort and use their cohort's dedicated equipment. Since multiple cohorts for each grade level will be outside at one time, students will rotate between designated play areas. Students will not wear face coverings.



Drinking fountains will not be available. Students are encouraged to bring a water bottle to fill at a bottle filling station or in a classroom sink.

TAKE NOTE: *If school started today, BHM students in grades K-5 would begin the 2020-21 school year with In-Person Learning.*

Hybrid Learning



Hybrid Learning will allow students to attend school in person 2 or 3 days per week, with at-home, independent learning the other 2 or 3 days per week. Below are the safety precautions and a sample schedule that has been put into place to make it happen.



Safety Precautions – The same safety standards that have been put into place for In-Person Learning will also be followed for the Hybrid model. Schools are limited to 50% capacity and social distancing guidelines of 6 feet or more will be enforced.

SAMPLE Hybrid Schedule for Elementary Students

Students will be scheduled in either Group A or Group B to limit the number of students in the building. Groups are determined by the last name of a student. Families who have children with different last names will work with the school to keep them in the same group.

Students will attend school 2 or 3 days each week and complete At-Home Learning assignments at home on the alternating days.

Group A (Student Last Names A-K) students will attend school in person on Mondays and Wednesdays, with At-Home Learning on Tuesdays and Thursdays.

Group B (Student Last Names L-Z) students will attend school in person on Tuesdays and Thursdays with At-Home Learning on Mondays and Wednesdays.

Fridays will alternate between Group A and Group B for either in-person or At-Home Learning.

Monday	Tuesday	Wednesday	Thursday	Friday
Group A: In-Person	Group B: In-Person	Group A: In-Person	Group B: In-Person	Group A and B Alternate In-Person and At-Home Learning
Group B: At-Home Learning	Group A: At-Home Learning	Group B: At-Home Learning	Group A: At-Home Learning	

SAMPLE Hybrid Schedule for Middle and High School Students

Middle and high school students will follow the same schedule as above with the exception of Fridays. All students will have At-Home Learning on Fridays with the ability for some students to receive additional in-person support from a teacher. Students at home will have opportunities for independent work, synchronous (live) classes with the teacher or prerecorded video instruction.

Monday	Tuesday	Wednesday	Thursday	Friday
Group A: In-Person	Group B: In-Person	Group A: In-Person	Group B: In-Person	Groups A and B At-Home Learning
Group B: At-Home Learning	Group A: At-Home Learning	Group B: At-Home Learning	Group A: At-Home Learning	

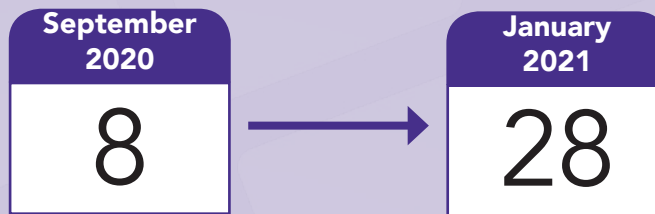
TAKE NOTE: If school started today, BHM students in grades 6-12, would begin the 2020-21 school year with Hybrid Learning.

Distance Learning 2.0



For families uncomfortable with returning for In-Person Learning or Hybrid Learning, BHM Schools is pleased to offer Distance Learning 2.0. The district used the feedback from the parent and student surveys this past spring to make necessary improvements to this learning model in order to provide a more structured learning experience for students.

Families who select this option for their child(ren) will be making a commitment to this model for the first semester (the semester ends January 28, 2021). Families who would like to participate in Distance Learning 2.0 for the 2020-21 school year, will indicate their decision in August.



Distance Learning Commitment Period

Distance Learning Expectations

The following is some of what families can expect during Distance Learning for students in grades K-12:

- Teachers will be available each school day:
 - Elementary Teachers (grades K-5) 8 a.m.-2 p.m.
 - Secondary Teachers (grades 6-12) 9 a.m.-3 p.m.
- Google Classroom will be the learning management platform for students.
- Elementary teachers will post a one-page overview of the tasks, assignments and activities and tests for the entire week by 8 a.m. on Monday in Google Classroom.
- Student attendance will be taken daily by the student's teacher(s). They are considered in attendance if a student or parent: has interaction with the teacher on that specific day; participates in a video or chat; calls on the phone; or posts completed work.
- Videos of instruction in core subject areas will be made available.

- Daily interaction opportunities for students both in large group and small group and/or individual check-ins.
- Opportunities for peer-to-peer interactions and collaboration.
- Specialists and Special Education staff will collaborate with the teachers to get instruction, activities and assignments to students. Special Education teachers can assign assignments to their specific students only.

Technology Needs

Whether a student is receiving Hybrid Learning or Distance Learning, the district will make sure that students have the technology they need. Families will indicate their needs through surveys sent out from the schools.

COVID-19 Screening

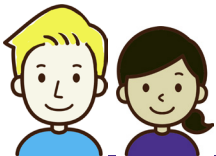


BHM families are being asked to screen (series of questions) their child(ren) before sending them to school. Likewise, BHM staff and visitors in our schools must also participate in a daily COVID-19 self-screening. Below is a sample check-list of questions students, parents and staff should answer before entering our schools:

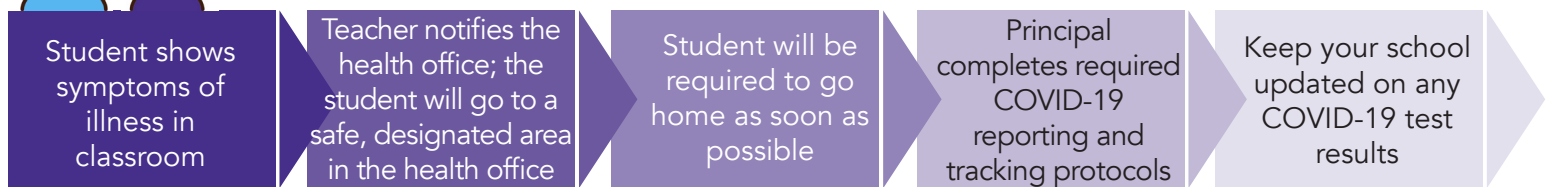
My child is not exhibiting any of the following symptoms associated with COVID-19:

- New onset cough; OR
- Shortness of breath (by themselves); OR
- 2 of the following:
 - fever (100.4 or higher)
 - chills
 - muscle pain
 - sore throat
 - loss of sense of smell or taste
 - gastrointestinal symptoms of diarrhea, vomiting, or nausea
- My child has not been in close contact with anyone within the last 14 days who has been quarantined or isolated due to COVID-19.
- My child has not been advised by any medical provider or health authority that he/she may have been exposed to COVID-19.
- I have followed the recommended travel guidelines by the Centers of Disease Control and/or local government for my student.
- I will immediately notify my building principal if I am unable to self-certify for any of the above reasons for my child(ren). I also understand that in the case that I am notified that my child(ren) may have been exposed to COVID-19 or start to exhibit any of the symptoms above while at school, I will immediately pick-up my child(ren) when contacted by school administration.
- I understand that my child(ren) (grades K-12) is required to wear a face covering over the nose and mouth.

This checklist is subject to change, per updates from public health officials.



What if my child feels sick at school?



Positive COVID-19 Case in School

No notification will be sent by the school if there is a positive case of COVID-19 in the building. The

Minnesota Department of Health will alert any families if a student has had prolonged contact with a positive case. The school will not be able to share any health information with families who contact the school because the information is protected under HIPAA (Health Insurance Portability and Accountability Act).

The place to
**dream, believe
and achieve.** 8

COVID-19 Decision Tree



What if I have COVID-19 Symptoms

For people (e.g., children, care providers, or staff) who have symptoms consistent with COVID-19, **stay home**.

throat, fatigue, congestion, loss of sense of smell or taste, or gastrointestinal symptoms of diarrhea, vomiting or nausea.

Symptoms of COVID-19 include: new onset cough or shortness of breath (by themselves) OR at least 2 of the following: fever (100.4°F or higher), chills, muscle pain, sore

If a person has a new symptom (for example, new loss of smell only) with no other diagnosis to explain it, they should stay home and talk to their health care provider about testing for COVID-19, even if it is the only symptom they are experiencing.

For people who received a laboratory test for COVID-19

+ Positive Test Result:

Stay home at least 10 days since symptoms first appeared AND until no fever for at least 24 hours without medication AND improvement of other symptoms. Siblings and household members also stay home for 14 days.

- Negative Test Result but Symptoms with No Other Diagnosis:

Stay home at least 10 days since symptoms first appeared AND until no fever for at least 24 hours without medication AND improvement of other symptoms. Siblings and household members also stay home for 14 days.

For people with a COVID-19 diagnosis without a lab test OR people with symptoms consistent with COVID-19 without a medical evaluation (e.g., monitoring symptoms at home)

Stay home at least 10 days since symptoms first appeared AND until no fever for at least 24 hours without medication AND improvement of other symptoms.

Siblings and household members also stay home for 14 days.

For people with other diagnoses (e.g., norovirus, strep throat) that explain the symptoms, or when a health care provider says symptoms are connected to a pre-existing condition

Stay home until symptoms have improved. Follow specific return guidance from the health care provider or follow the Infectious Diseases in Childcare Settings and Schools Manual (www.hennepin.us/daycaremanual).

If symptoms related to a pre-existing condition change or worsen, talk to a health care provider to determine next steps.

Siblings and household members do not need to stay home.

When to End Home Isolation Based on Symptoms Rather than Testing

- Those who tested positive but never develop symptoms can end isolation after 10 days.
- Those who tested positive and have moderate to mild symptoms can end isolation after 10 days if at least 24 hours have passed without a fever and other symptoms have improved.
 - Those who tested positive and have severe illness may need to continue isolation for a full 20 days.
 - Those who were exposed to the virus but were never tested and have no symptoms should continue to quarantine for the full 14 days.

The Centers for Disease Control (CDC) notes that it's possible that a person known to be infected (through testing) could leave isolation earlier than a person who is quarantined because of the possibility they are infected.

If a person is exposed to COVID-19 but tests negative, he/she is still required to isolate for 14 days because the test can fail to detect the virus in the first days of infection.

Special Education Services



PRIDE Transitions will follow the plan for secondary students – beginning the school year in Hybrid Learning but then making individual decisions about additional days through the student's IEP teams.

Special Education and Section 504

To the greatest extent possible, each student with a disability will be provided the special education and related services identified in the student's IEP developed under IDEA or a plan developed under Section 504.

If changes to the 504 plan are required in any learning model (in person, hybrid or distance), the 504 coordinators will initiate the process of updating the 504 plan. Social workers/Counselors will work with families to address 504 related questions.

If a student qualifies for special education services, Individual Education Program (IEP) teams will work with families to review and create individualized plans to address specific services in all three learning models. If current IEPs require changes to appropriately support a student's education through any learning model (In-Person, Hybrid or Distance Learning), parents will have an opportunity to provide input into these plans and will be contacted to discuss appropriate changes. Parents will be given a prior written notice for consent. Throughout the school year, special education case managers will work with families regarding IEP related questions. Any changes to a student's IEP will be determined by the IEP team.

The district will follow the Guidance for Delivering Direct Student Support Services: Staff Protective Equipment for all students who need personal and/or medical care. You can find the document at the following link:
<https://tinyurl.com/y6qeqhym>

Special Education Evaluation processes and timelines will remain in effect and will continue to be completed. Evaluations will be conducted following MDH and district safety procedures.

Early Childhood Special Education (ECSE)

Instruction will be provided through child-focused, family-centered plans. The focus is to support families and caregivers in engaging their child in learning through routines at home. Individual student teams will work together with families to determine any necessary changes to a student's plan.

English Language Learners

Regardless of the learning model, English Learners will continue to receive language development services. Service and support will be personalized based on individual students' English language proficiency. General education teachers and English Language teachers will collaborate to ensure equal access to grade-level standards. Individual instructional approaches, content and communication with families are based on individual student instructional needs. ELD teachers will collaborate with families and mainstream teachers to provide support for English Learners

Homeless Learners

Individuals will be contacted to confirm access to needed support required during a hybrid or distance learning model. Families will be connected with appropriate and necessary resources as needs are identified.

Special Services

Transportation



- All students will be required to wear a face covering.
- All students will be given an assigned seat with family members seated together.
- Students will use hand sanitizer when getting on the bus.
- Students will fill the bus from back to front, and they will exit the bus from front to back.
- High touch areas on busses will be sanitized between elementary and secondary runs.
- High touch surfaces will be sanitized between shuttle runs.
- Busses will have additional masks for students who forget a mask for that run.
- Refusal to wear a mask will be referred to the principal for further discussion as with any other bus behavior referral.
- Ill students will not be allowed on the bus at the stop if a parent is still present. If no parent present, the student will be isolated on the bus and school will be notified that the child is coming and a staff member will come to connect with the student.
- Office staff will connect with the parents to come and get their child. Same protocol will be followed for a student that becomes ill during the bus ride.

Nutrition Services



This year, BHM Nutrition Services will offer students a variety of hot and cold meals that will be individually packaged. Self-service food and beverage distribution in the cafeteria has been discontinued.

In-Person Learning

- Breakfast and lunch will be available to students on-site daily at our regular meal rates. Meals will either be pre-packaged grab-and-go or served to students directly.
- At the elementary and middle school, students will eat lunch with their grade level
- Physical distancing signs will be used in the cafeterias.
- Staff will wear face coverings.
- Students will wash hands before meal service.
- Limited ala cart and additional menu items for students in grades 6-12 will be available.

Hybrid and Distance Learning

Under the Hybrid model, students will have the opportunity to receive meals for the days that they are not at school. In a Distance Learning scenario, students will have the opportunity to receive meals when learning from home.

Breakfast Prices

Kindergarten Students: FREE
Elementary: \$1.90
Secondary: \$2.00
Non-Student/Second Meal: \$2.20

Lunch Prices

Elementary: \$2.80
Secondary: \$3.00
Non-Student/Second Meal: \$3.85

Free and Reduced Meals

Families can apply for free or reduced price school meals online. A new application is required each year. You can find the application in the Campus Parent Portal found on the district website at www.bhmschools.org

Community Education

BHM Community Education will continue to offer youth and adult programming and services as we enter into the 2020-21 school year. They will continue to follow the guidance from the Minnesota Department of Health and the Minnesota Department of Education and the district's plan for bringing students Back "Together" in BHM Schools. Community use of facilities will be available. Applications and information are available at www.bhmschools.org.

Pre-K Programming— Ready Set Grow and Spring Into Preschool



In-Person & Hybrid Model

In-Person and Hybrid learning models will meet on the days and times, in which parents have registered their child, for most of our preschool classes. We will continue to follow the Department of Education guidance with regard to the hybrid model, and communicate if there is a change. We will communicate digitally with parents through See-Saw, Class Tag, email, phone and face-to-face during drop-off and pick-up.

Our teaching teams will meet students outdoors in the looping lanes at each site for pick up and drop off. Should an adult need to enter our buildings, they will only be allowed to enter the main office or vestibule.

In order to allow for the safest learning environments, our teaching teams will create well defined spaces for small groups of children to learn and play. In addition, our teacher and custodial teams will increase sanitizing of high touch surfaces, toys and bathrooms.

All adults in our buildings must wear face coverings, while preschool students will not be required (Executive Order

20-81). We will be keeping cohorts of students together in the hallways, locker area, bathrooms, and outdoors.

Distance Learning Model

If required, we will transition to a Distance Learning model in alignment with our K-5 schools. The communication tools used in the In-Person and Hybrid models will be used, along with Google Meet to deliver instruction, continue relationships and support growth and development. Our tuition will be reduced for the duration of a distance learning model. In addition, we will provide Pre-K Bison packets to support learning activities in a Distance Learning model.

Early Childhood Family Education (ECFE)

We welcome one parent to attend our ECFE parent/child class with their student. Teaching teams will meet families at the main school office or vestibule. Each class will create a closed Facebook page, to support communication and relationships between the teaching team and parents.

ECFE will follow the same safety protocols and Distance Learning model as ECFE preschool and our K-5 schools.

KidKare Childcare



Under the In-Person model for elementary schools, KidKare is available for a fee and will be available at all elementary locations (Discovery is at Parkside). Children ages 5-12 will be grouped in grade-level cohorts.

KidKare will remain open for all families under the Hybrid and All-School Distance Learning models for a fee. However, families who are a part of Tier I, as outlined in the Executive Order 20-82, will receive FREE childcare during the regular school hours and for a fee before and/or after school. Tier I families include:

- Healthcare and public health
- Law enforcement, public safety and first responders
- Food and agriculture
- Judicial Branch (essential services)
- National Guard (activated under a Governor Executive Order)
- Educators and school staff providing In-Person instruction or caring for children of critical workers
- Childcare and school-age care providers

School-age KidKare students will follow the same rules for face coverings as they do for the school day. They will be required to wear face coverings in communal areas and when using the bathroom or combining at the start and end of their day.

KinderKids

The KinderKids program will be available during the day (except in Montrose) for preschool-age children, 3-5 years of age. Preschool aged children will not be required to wear masks. Physical distancing and cleaning procedures set by BHM Schools will be followed (as outlined in this document).

The place to
**dream, believe
and achieve.** 12

Athletics and Activities



The Minnesota State High School League (MSHSL) is moving forward with fall athletics and activities (co-curricular activities). Buffalo Community Middle School (BCMS) and Buffalo High School (BHS) Activities Departments will be working to adjust game schedules and create protocols for practice, games, transportation and crowds.

MSHSL Fall Decision

The Minnesota State High School League (MSHSL) Board of Directors voted to move forward with the following fall sports: Boys and Girls Soccer, Girls Tennis, Girls Swim and Dive and Boys and Girls Cross Country while districts are operating In-Person or during Hybrid learning. Students who choose Distance Learning will be eligible to participate in athletics and activities. Football and Volleyball will move to a shortened season between the traditional winter and spring seasons.

Status of Fall Athletics and Activities

The MSHSL plan includes starting most fall sports on August 17 at BHS (BCMS will begin after the start of the school year) but with several modifications including: safety recommendations for practice and game play, crowd limitations and guidelines for transportation as well as games and length of season reductions. The MSHSL is asking all schools to follow the COVID-19 Sports Guidelines for Youth Sports created by the MN Department of Health (MDH). If schools enter into a Distance Learning model due to active cases recorded by the county in which the school district resides, all co-curricular activities will be suspended for that school.

Transportation

We will provide team transportation to away events as needed. BHS Families who register for co-curricular activities are being asked to sign a COVID-19 Notice with the understanding that accommodations may be made to our transportation policy and how the district may typically transport participants. We will follow the Minnesota Department of Health (MDH) guidelines in terms of how many athletes will be allowed on a bus at a time (50% capacity during Hybrid Learning, 100% capacity during In-Person learning). Masks will be required on the bus.

Positive COVID-19 Case Procedure

If a positive case of COVID-19 is reported, we will contact MDH. MDH will interview the affected person, determine the dates when the case was infectious, identify anyone that may have been exposed, and collect contact information for those individuals. People identified as exposed (close contacts) are those who spent at least 15 minutes within 6 feet of the case while the case was infectious. Coaches will keep accurate rosters including who was at practices and games each day so contact tracing can be conducted quickly. MDH will send communication to the school about any specific direction that needs to be taken in the program(s) related to COVID-19 cases.

Non-MSHSL Activities

BCMS and BHS will be making a determination on fall clubs and activities before the start of school and will communicate with families.

Resources

To find more detailed information regarding high school athletics visit the MSHSL website: www.mshsl.org.

For high school conference schedules visit, the Lake Conference website: www.lakeconference.org.

For more information about BHS athletics and activities, visit the Activities page on the high school website: www.bhmschools.org/activities-0

For more information about BCMS athletics and activities, visit the Activities page on the middle school website: www.bhmschools.org/activities.