

VOTE

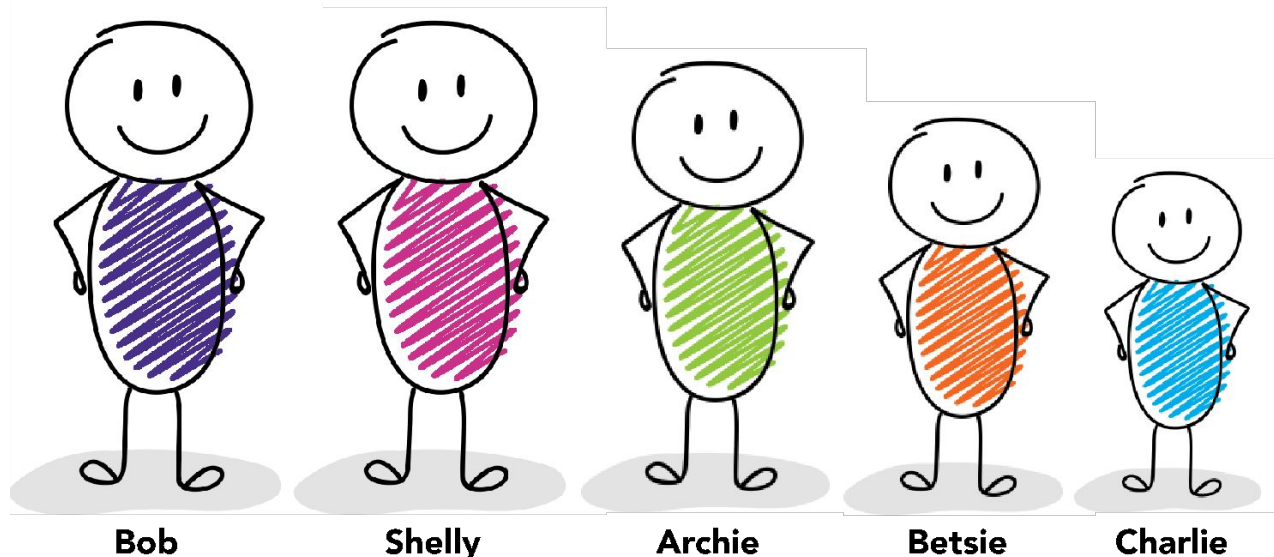
BHM Operating Referendum
November 5, 2019



Buffalo
Hanover
Montrose

BHM SCHOOLS

The place to dream, believe and achieve.



Meet the Matters

The Situation

The last voter-approved operating referendum was in 2002 (17 years ago).

Over \$3 million in cuts made 2008-2010 after failed operating levy elections.

One-time federal and state money helped build up the district fund balance (savings).

Over the last 3 years, BHM Schools was able to hire back more teachers (reduce class sizes) and support staff.

State funding has not kept up with inflation and the district fund Balance is running low.

BHM budget increases \$1-1.5 million annually (inflation/operating costs).

This does not include the increasing annual deficit for special ed mandates (currently at \$5.9 million).



The Situation, continued

The district failed to pass an operating levy in Nov 2018 and made over \$1.3 million in budget reductions.

Teaching and Learning curriculum purchase reductions	\$ 150,000
\$50 Transportation Waiver Credit program eliminated	\$ 24,000
Hiring freeze-5.0 FTE teachers not replaced throughout the district	\$ 325,000
Postage-fewer mailings going out districtwide	\$ 6,000
English Learner Teaching Position added-1 FTE teaching position	\$ (65,000)
Tuition costs paid to other districts for student placements reduced	\$ 20,000
Legal fees budget reduced	\$ 10,000
Superintendent contingency budget reduced	\$ 50,000
Supply budget reductions across all departments except Special Education	\$ 100,000
Activity and gate fee increases	\$ 25,000
Energy Mangmt/Op savings through temp control changes and other cost containment efforts	\$ 55,000
BHS clerical position reduction	<u>\$ 25,000</u>
	Total \$ 725,000
Reduce 10.0 FTE teaching positions to move back to Fiscal Year 2014-15 district determined class size ratios	<u>\$ 650,000</u>
Total 2019-20 Budget modifications	<u>\$ 1,375,000</u>

What BHM Schools Needs

The district is asking for an operating levy referendum that would generate \$750 per student.

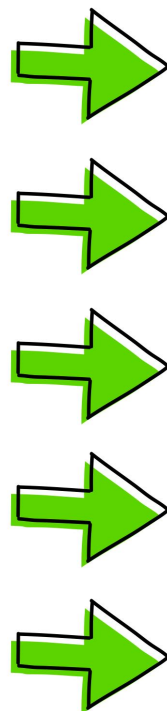
That is **NOT** the tax impact for each property owner.

It will last for 5 years and generate \$4.5 million on an annual basis.

This will maintain the high quality programs and services already in place.

Did you know... The district conducted a community-wide survey and 43% said they would support the district asking for \$850 and 22% said they would support \$750 to maintain programs and services (concluding that 65% would support \$750).

The Tax Impact



BHM Operating Levy Tax Impact			
Estimated Market Value Rates, Taxes Payable in 2020 (for Referendum Only)		Taxes for Proposed Levy 0.12466%	
Property Type	Estimated Market Value	Estimated Taxes for Referendum Only	
Residential, Homesteads, Apartments, Commercial-Industrial Property	\$150,000	\$187	\$15.58 per month
	\$200,000	\$249	\$20.75 per month
	\$250,000	\$312	\$26.00 per month
	\$300,000	\$374	\$31.17 per month
	\$350,000	\$436	\$36.33 per month
	\$400,000	\$499	\$41.58 per month
	\$450,000	\$561	\$46.75 per month
	\$500,000	\$623	\$51.92 per month
	\$800,000	\$997	\$83.08 per month
	\$1,000,000	\$1,247	\$103.92 per month
<p>*Amounts in the table are based on school district taxes for the operating referendum only and do not include tax levies for other purposes. Tax increases shown above are gross increases, not including the impact of the Minnesota Homestead Credit Refund ("Circuit Breaker") program. Many owners of homestead property will qualify for a refund, based on their income and total property taxes. This will decrease the net effect of the referendum levy for many property owners.</p> <p>NOTE: Agriculture property will pay taxes for the proposed referendum based only on the value of the house, garage and one acre. Seasonal recreational residential property (i.e. cabins) will pay no taxes for the proposed referendum.</p>			

We are Not Alone

Other districts are in the same situation as BHM Schools.

Many of them have put voter-approved operating levy referendums in place to avoid budget cuts.

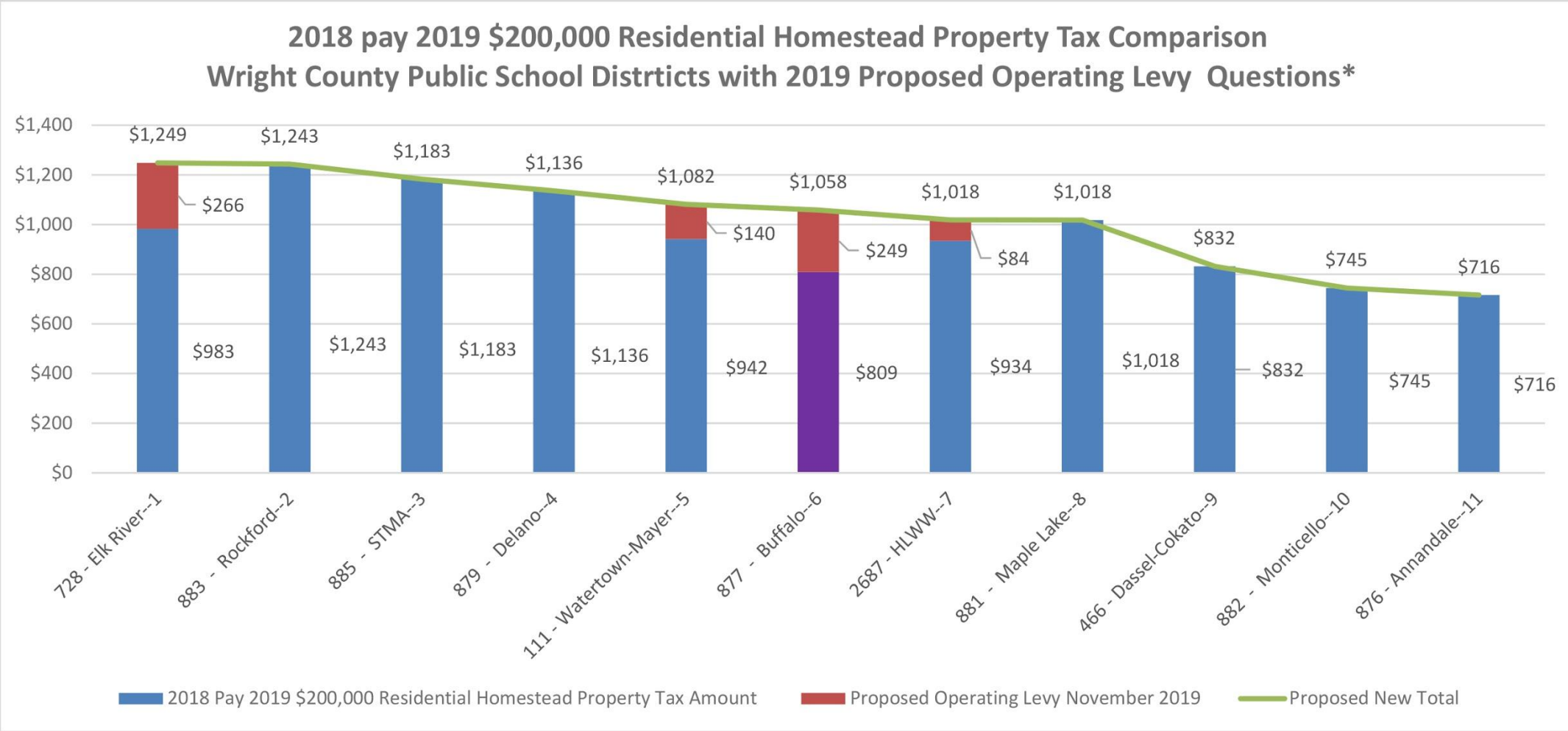
District with More Funding than BHM Schools by the Amount Listed

- Delano—\$358
- Howard Lake-Waverly-Winsted—\$70 (*\$250)
- Elk River (Rogers)—\$467 (*\$750)
- Maple Lake—\$600
- Monticello—\$510
- Osseo (Maple Grove)—\$1,457
- Rockford—\$750
- Watertown-Mayer—\$67 (*\$425)
- **BHM Schools—\$0**

**The amount districts are asking for in an operating referendum election this fall.*



BHM Tax Rates Compared to the Surrounding Districts



*Source - Wright County, Minnesota Auditor/Treasurer's Office Property Taxes, Values, Levies, and Rates
<https://www.co.wright.mn.us/780/Property-Taxes-Values-Levies-and-Rates>


If the Operating Levy is Approved

If the operating levy is approved the high-quality programs and services BHM provides will be maintained.

The funding  will ONLY go towards operating costs such as salaries, supplies, utilities, programs and activities.





It will NOT restore any of the cuts made for the 2019-20 school year.

Remember: Levies are for Learning and Bonds are for Building

Did you know... Only 20% of the funds  from the 2014 bond referendum went towards the Buffalo High School activity fields. The majority of the \$33 million bond went towards new entrances at Discovery, Hanover and Tatanka Elementary STEM Schools, classroom additions, building repairs and the Buffalo High School roof replacement.

If the Operating Levy Fails

If the operating referendum fails, BHM Schools will need to make \$2.9 million in budget reductions. The BHM School Board has identified a list of cuts for the 2020-21 school year and includes:

- Cut 22 teachers, 1 administration and 11 other staff members
- Close Phoenix Learning Center
- Close Discovery Elementary
- Cut Quest (gifted program)
- Cut wRight Choice (alternative for out-of-school suspension)
- Cut 6 activities at Buffalo High School
- Cut ALL middle school activities
- Cut 3 regular bus  routes (longer ride times and longer walking distances)
- Increase Buffalo High School activity and parking fees
- Increase Buffalo High School activity passes, tickets and gate prices
- Reduce College in the Schools offerings
- Reduce supply    budgets district-wide by 11%

A complete list of 2020-21 cuts can be found on www.bhmschools.org

Voting Basics

When to Vote

Tuesday, November 5 from 7 a.m.-8 p.m.

Where to Vote—Combined Polling Places

Buffalo High School--877 Bison Blvd, Buffalo, MN

Hanover City Hall—11250 5th St NE, Hanover, MN

Montrose Community Center—200 Center Ave S, Montrose, MN

More Information

Website: www.bhmschools.org Hotline: 763-682-0877 Email: election@bhmschools.org

Schedule a Presentation

Want to know more about the election, school finance or how the district spends the budget?
Call 763-682-8706 to schedule a presentation. No group is too small.



Early Voting

Going out of town?

Don't want to forget to vote?

Driving your kids all over and won't have time to vote on Election Day?

In-person Early Voting

BHM District Office located in Discovery Center (214 1st Ave NE, Buffalo, MN),

Monday through Friday

8 a.m.-4:30 p.m.

Early Voting Application

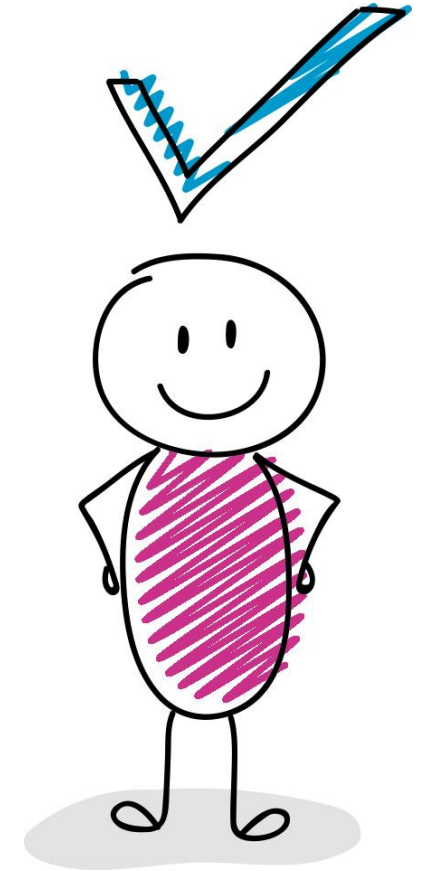
www.bhmschools.org under Election Information

Print the form and mail it in OR

Fill it out online and email it in OR

Fill out the form, take a picture of the form and email it in

(The address is on the back of the form.)



Remember to vote by Tuesday, November 5th, 2019
Polls are open from 7:00 a.m. to 8:00 p.m.

**your VOTE
is your VOICE**