

Osmosis & Diffusion Notes

Diffusion

*The movement of molecules from an area of _____ concentration to an area of _____ concentration.

Examples of Diffusion demo

- Tea
- Perfume
- Room fresheners

Diffusion

- Diffusion does _____ use energy.
- When the particles are balanced on both sides of a membrane, _____ has been reached.

Osmosis

- The diffusion of _____
across a semi permeable
membrane.

Osmosis

- Osmosis does _____ use
_____.

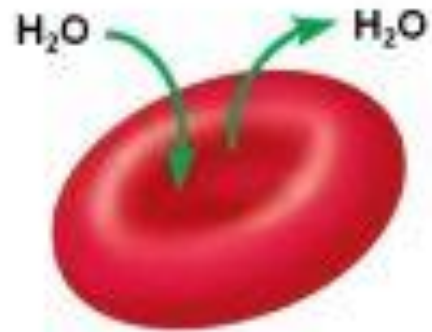
Passive Transport

- Passive Transport does _____ use energy.
- Both _____ and _____ are examples of passive transport.

Blood example:

- Hypotonic (_____-)-Refers to the solution outside the cell. (Cell Swells)
- Hypertonic (_____-)-Refers to the solution outside the cell. (Cell Shrinks)
- Isotonic (_____-)-Refers to the solution outside the cell. (Normal Cell)

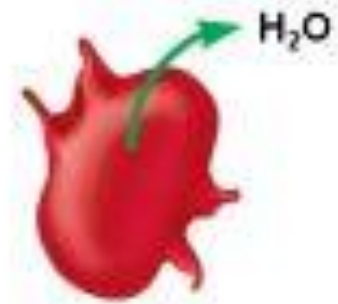
Animal cell



(1) Normal

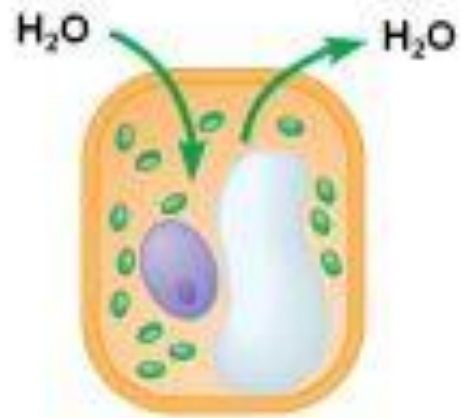


(2) Lysed

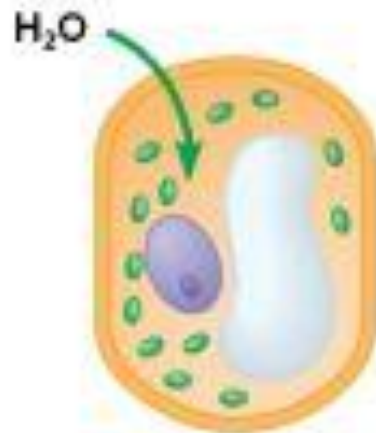


(3) Shriveled

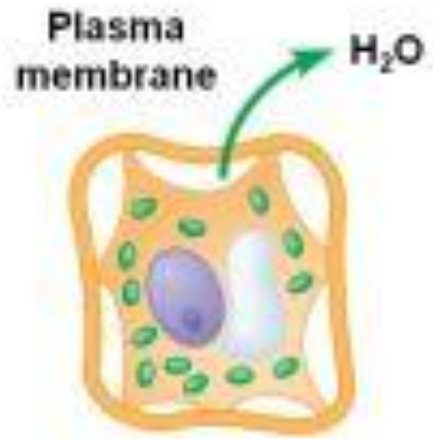
Plant cell



(4) Flaccid



(5) Turgid



(6) Shriveled (plasmolyzed)

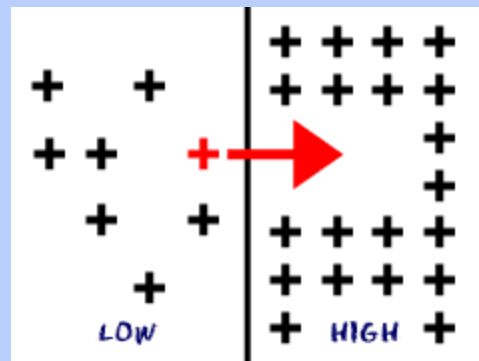
Hypotonic

Isotonic

Hypertonic

Active Transport

- _____ require energy.
- Energy is needed to , _____ or _____ certain particles across the cell membrane.



Two examples of Active Transport

- Endocytosis
- Exocytosis

Endocytosis

- “endo= _____ & cytos = _____”

So, this word means...

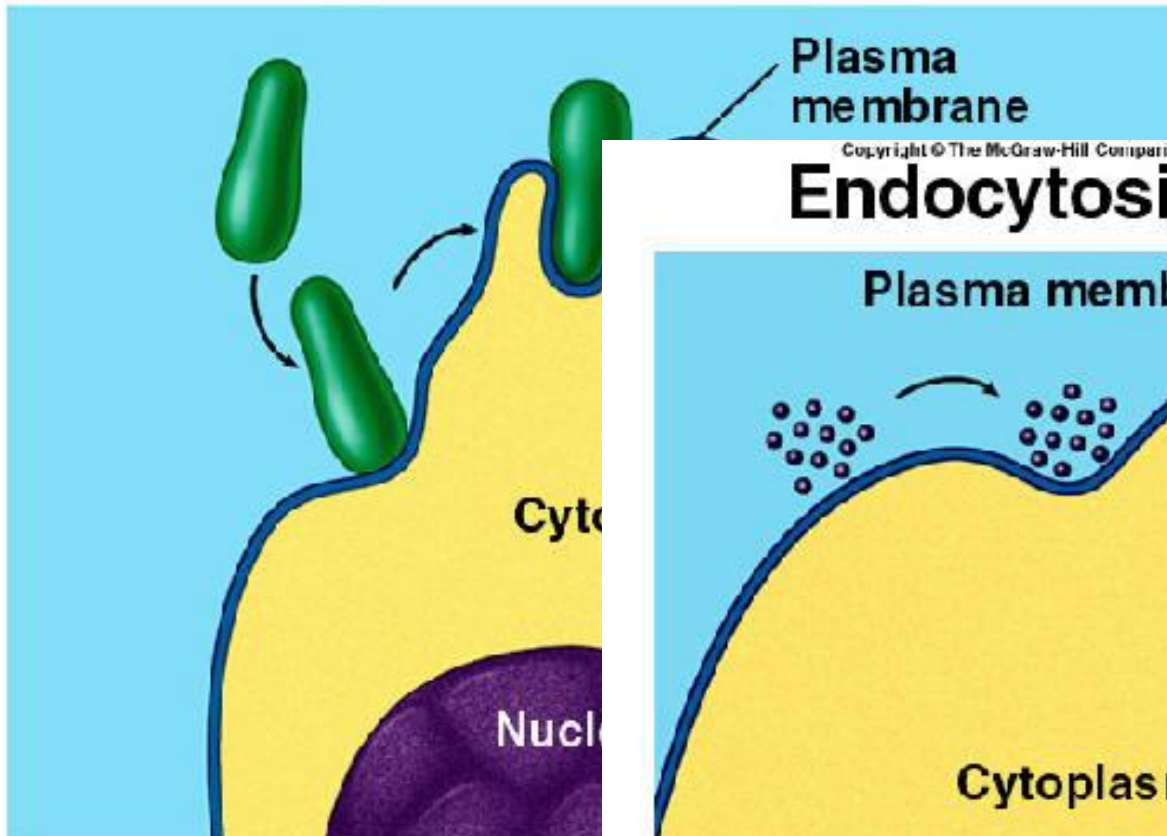
“ _____ ”

- A form of active transport, so _____ use energy
- Phagocytosis = “ _____ ”
- Pinocytosis = “ _____ ”

What is happening in the pics?

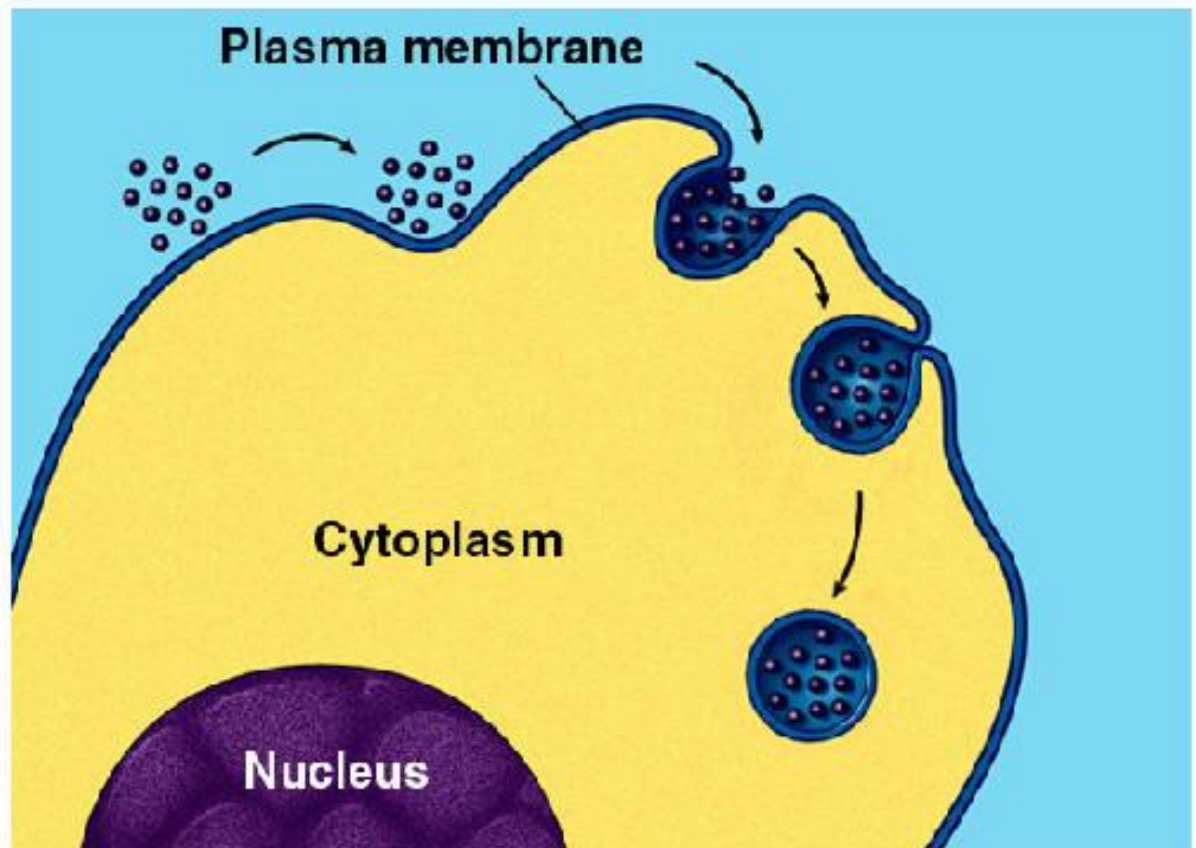
Copyright © The McGraw-Hill Companies, Inc. Permission required for reproduction or display.

Endocytosis – Phagocytosis



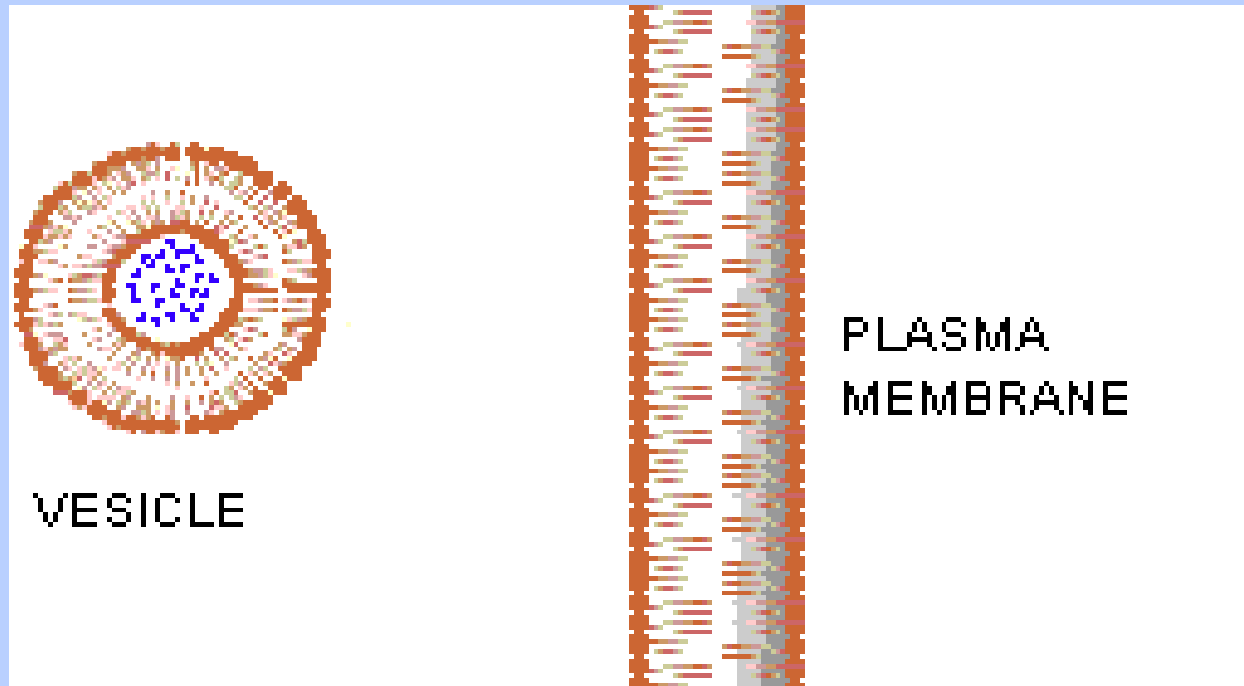
Copyright © The McGraw-Hill Companies, Inc. Permission required for reproduction or display.

Endocytosis – Pinocytosis



Exocytosis

- “exo=_____ cytosis=_____
- Getting rid of excess water or waste.



Example of Phagocytosis

- Phagocytose 1 on you tube.